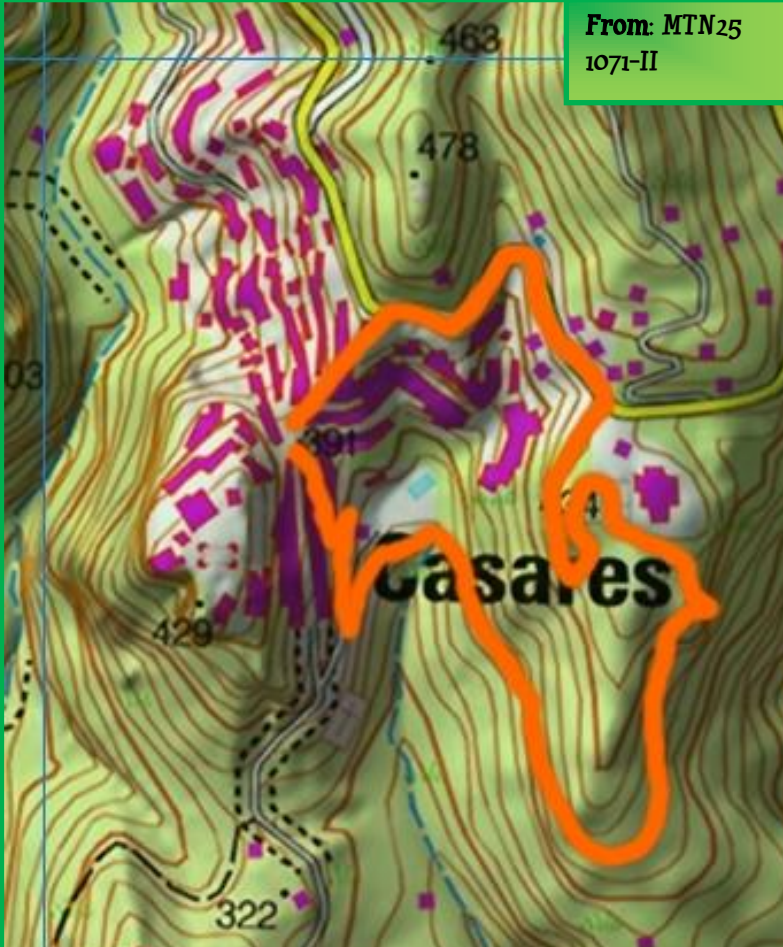




Panoramic Tour



From: MTN25
1071-II

Base cartográfica © Instituto Geográfico Nacional de España



1,038 ft →
Difficulty level:
Easy.

Conditions: short distance, good surfaces, some steps and slopes.
Use caution along the road, which leads to the car park.

This route gives perspectives of the town of Casares and surrounding countryside from various viewpoints. It starts and ends in the **Plaza de España**.

From the Plaza we take Calle Monte northwards for a short distance before turning right up some steps and along a series of alleyways to the main Estepona road, MA-8300, where we head east. The route passes the restaurant Mi Cortijo from where there is a good view of Casares. It carries on past Restaurante Curro and climbs a wooden walkway to reach the road by Restaurante La Terraza. After this the route turns down a concrete drive to reach a panoramic walkway giving fine views across Casares. After a stretch along the side of the hill the walkway loops back and climbs to the viewpoint at **Puerto de la Cruz**. This is the highest point on the walk, and the route descends along the new road alongside a hill towards the municipal car park giving good views towards the sea and a succession of hills to the south and the mountains of the Campo de Gibraltar to the north-east.

As the road takes a sharp bend to the right the town of Casares is again revealed, but this time from below. The route goes past the sports area and climbs through narrow alleyways to **Calle Juan Cerón**, which takes the walker back to the start point.

LINKS

GPS trail 

 Video

General 

